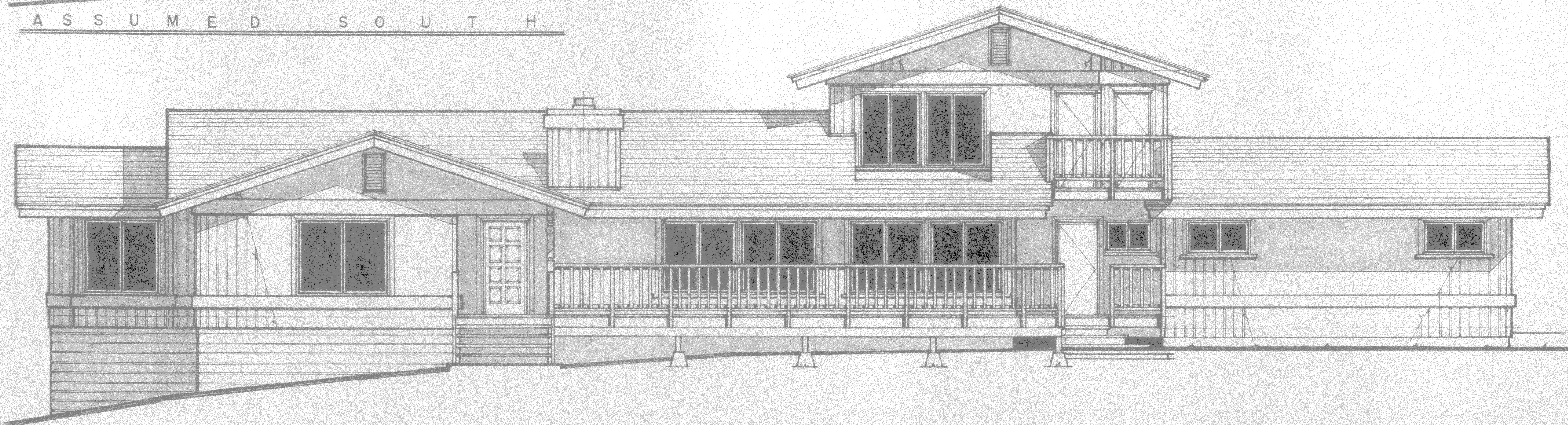


A S S U M E D S O U T H.



A S S U M E D W E S T.

PLANS FOR:
MIHAY.
 HORRO BAY.

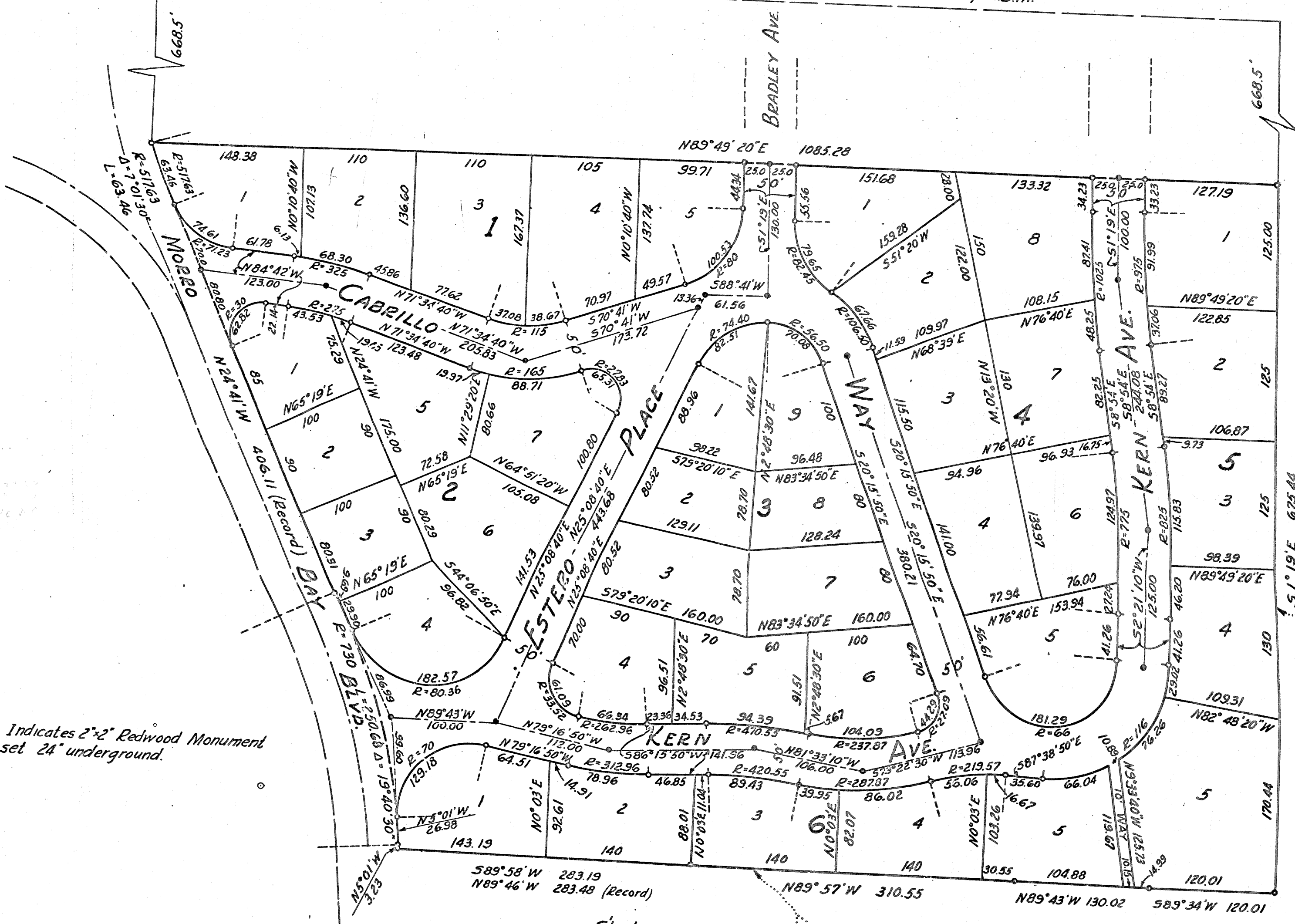
db
 DON BRICKER
 CONSTRUCTION,
 FRESNO, CALIF.
 (209) 291-0806.
 CAMBRIA, CALIF.
 (805) 927-5006.

DATE: _____
 REVISED: _____

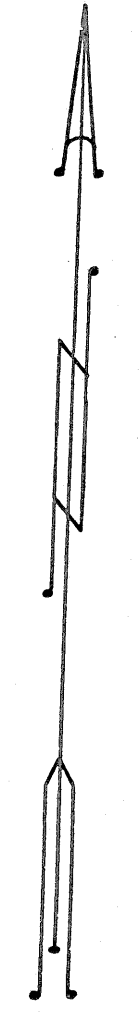
SHEET NO. _____

JOB NUMBER: _____

N 1/4 line of Govt. Lot 4 of Sect. 31, T. 29S, R. 11E., M.D.M.



W 1/4 line of Arcadia St., Cabrillo Country Club No. 1
E 1/4 line Govt. Lot 4



TRACT NO. 41
SAN LUIS OBISPO COUNTY
CALIFORNIA
 MAY, 1946
 BURCH & BECK, ENGRS.
 Scale 1" = 80'